

# Standard Connections Application Criteria

## Effective from 23 September 2019

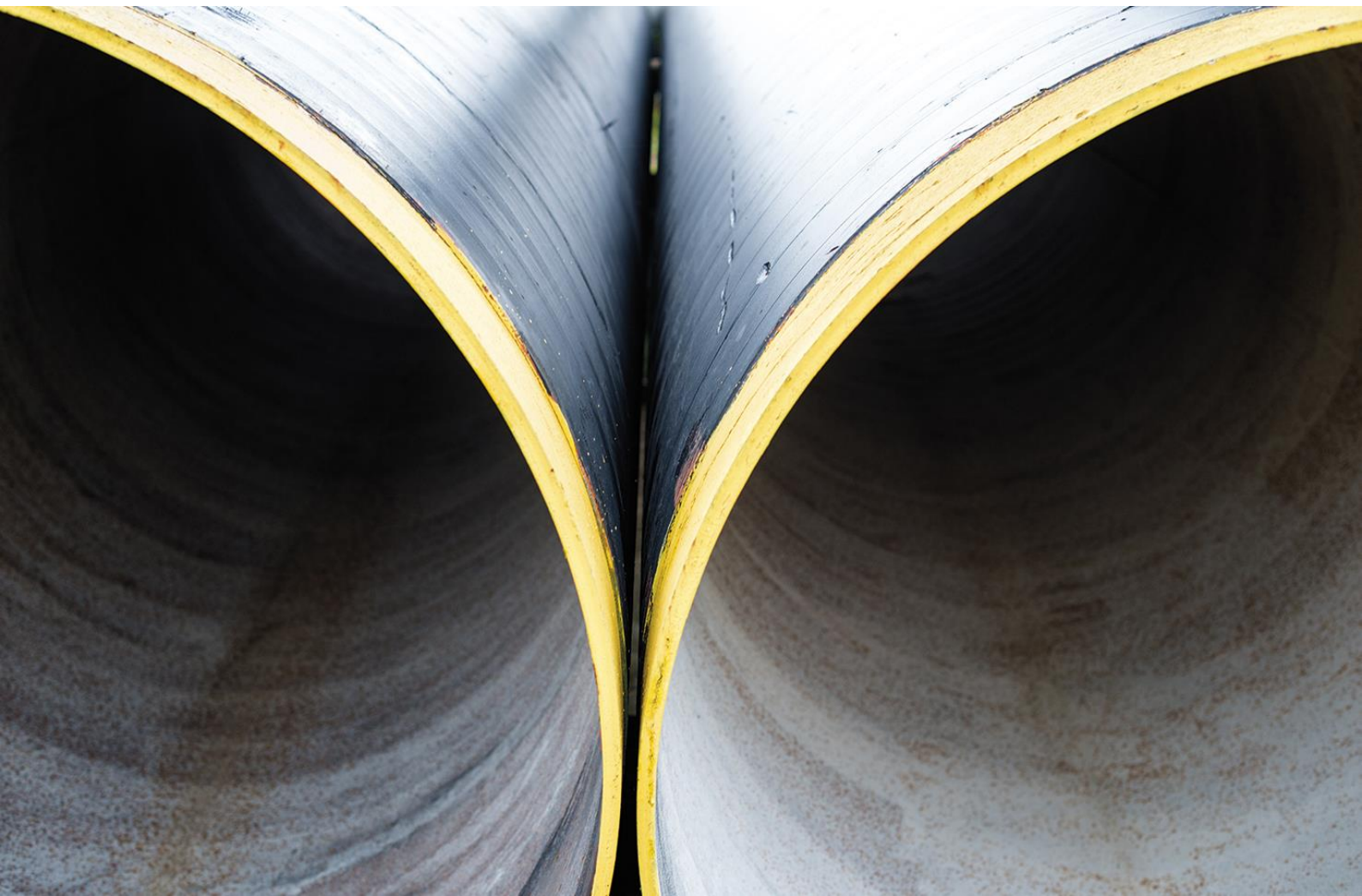
### What's changing:

**Cadent's application criteria for standard domestic connections charges are being amended with effect from 23 September 2019**

Cadent has revised its application criteria for a standard charge when applying for a new gas connection.

The changes to the criteria are set out in the summary below and are consistent with our approved charging methodology:

- Up to 63mm pipe
- Up to 40m in private length, and as long as the public remains within 23m, the combined length can reach 63m at an additional charge.
- Up to 10 gas connections



# Application Criteria – Standard Domestic Connections

Length on private land	East Anglia	East Midlands	London	North West	West Midlands
0m	£473	£420	£673	£420	£420
0-5m	£599	£510	£836	£510	£510
5-10m	£725	£600	£998	£600	£600
10-15m	£851	£690	£1,161	£690	£690
15-20m	£977	£780	£1,324	£780	£780
20-30m	£1,313	£1,020	£1,758	£1,020	£1,020
30-40m	£1,649	£1,260	£2,192	£1,260	£1,260

## Application Criteria

The above standard charges are applicable for up to 40 metres of service pipe to be laid on land owned or occupied by the person requiring the connection, where the service termination is not above the exterior ground surface level. To be eligible for a standard charge, all the following criteria must be met:

- the new connection must be for individual premises situated within 23 metres of one of our relevant mains, operating at a pressure equal to or less than 2 barg, with no engineering difficulties or other obstacles present that would result in more than 23 metres of pipe being laid to the premises boundary;
- the premises is being used or proposed to be used mainly or wholly for domestic purposes;
- no more than 10 gas connections
- there is no existing gas supply to the premises;
- the premises is not situated within a “live” Infill Scheme (see Other Information below)

Any individual premises meeting the above criteria is eligible, regardless of whether the enquiry is part of a single or multiple connection request. Where the above criteria are not met, a bespoke quotation will be provided for the required new connection works, including, but not limited to works which involve the crossing of or affected by the presence of a motorway, railway, waterway, site of special scientific interest, or where an easement or other legal permit has to be obtained from any person other than the person requesting the works

From **23 September 2019** customers that are applying for a new gas connection, where the land owned or occupied by the person requiring the connection is above 40m are now eligible to receive a standard charge, with an additional charge per metre for up to a combined length of 63m (as long as the public remains within 23m). If the combined total is above 63m then this would need to go for bespoke costing, with a quotation charge applicable.

<b>Road Category</b>	<b>Cost per additional metre</b>
Road	£205
Footway	£194
Unmade/Verge	£152
Ducted	£76