

Standard Connections Charges Effective from 03 January 2020

What's changing:

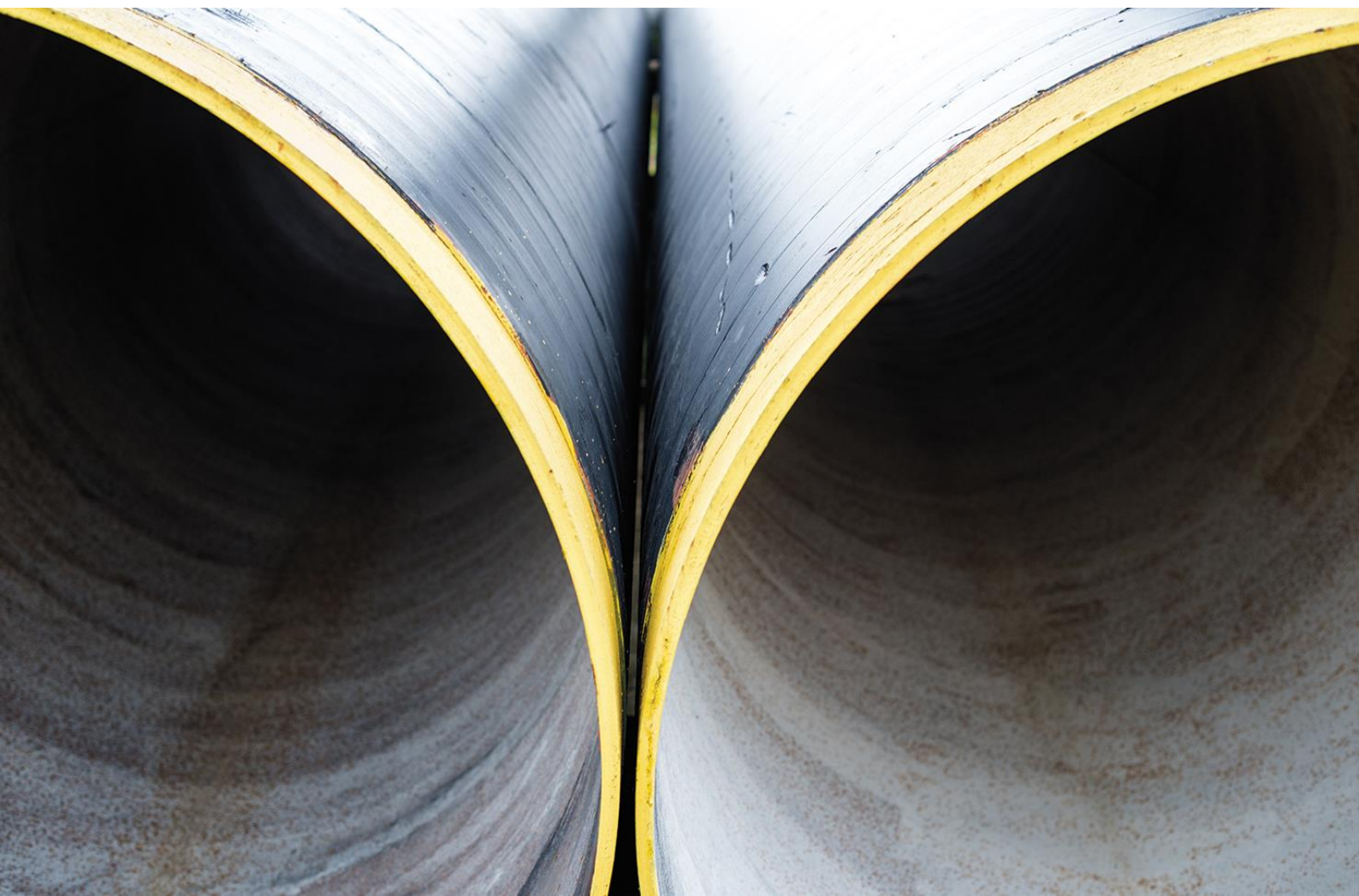
Cadent's standard charges for standard domestic connections charges are being revised with effect from 03 January 2020.

Cadent has revised its charges to reflect the current costs it expects to incur in providing connections services consistent with our approved charging methodology.

The changes to the charges are set out in summary below (all charges are ex vat):

By following the charging methodology on how standard domestic connection charges are calculated there will be some changes to the standard charges to the customer for New Connections, Alterations and Disconnections.

The tables will on the following page will show the new charges which will go live on 03 January 2020



Statement of Charges – Domestic Connections

Table 1 - Standard domestic connection charges (excl. VAT)

Length on Private Land	North West	West Midlands	East Midlands	East Anglia	London
0m	£460	£460	£460	£520	£740
>0m to 5m	£560	£560	£560	£658	£918
>5m to 10m	£659	£659	£659	£795	£1,093
>10m to 15m	£754	£754	£754	£935	£1,274
>15m to 20m	£854	£854	£854	£1,074	£1,452
>20m to 30m	£1,121	£1,121	£1,121	£1,439	£1,923
>30m to 40m	£1,382	£1,382	£1,382	£1,807	£2,396

Table 2 – Savings against standard domestic connection charges

Characteristic / option for	Saving against standard charge
Customer elects to dig and reinstate their own trench on private land	33%
Customer supplies and installs their own meterbox	5%
Where an additional Connection can be made off the same meter manifold and where the work can be carried out under the same excavation	85%

Statement of Charges – Alterations

Table 1 - Standard domestic alteration charges (excl. VAT)

Service Length	North West	West Midlands	East Midlands	East Anglia	London
Up to 5m	£711	£711	£711	£1,062	£1,489
>5m to 10m	£1,155	£1,155	£1,155	£1,450	£2,093
>10m to 15m	£1,461	£1,461	£1,461	£1,838	£2,692
>15m to 20m	£1,766	£1,766	£1,766	£2,291	£3,564

Table 2 – Savings against standard domestic connection charges

Characteristic / option for	Saving against standard charge
Customer elects to dig and reinstate their own trench on private land Or Back to back alterations, where a meter is moving from inside to outside or outside to inside.	33%
Customer supplies and installs their own meterbox	5%
Customer arranges for their own gas safe engineer to relocate the meter	5%
Customer arranges their own internal pipework and reconnection (incl. purge and relight of appliances)	5%

Statement of Charges - Disconnections

Table 3 - Standard service disconnection charges (excl. VAT)

Length on Private Land	North West	West Midlands	East Midlands	East Anglia	London
<=63mm PE / 2" met	£1,211	£1,211	£1,211	£1,342	£1,691
90mm PE / 3" met	£1,668	£1,668	£1,668	£1,897	£2,376
125mm PE / 4" met	£1,962	£1,962	£1,962	£2,224	£2,921
180mm / 6" met	£2,256	£2,256	£2,256	£2,551	£3,292

Table 4 – Savings against standard service disconnection charges

Characteristic / option for	Saving against standard charge
Each additional Disconnection at the same location, where a separate excavation is required	4%
Each additional Disconnection, where no further excavations are required	92%